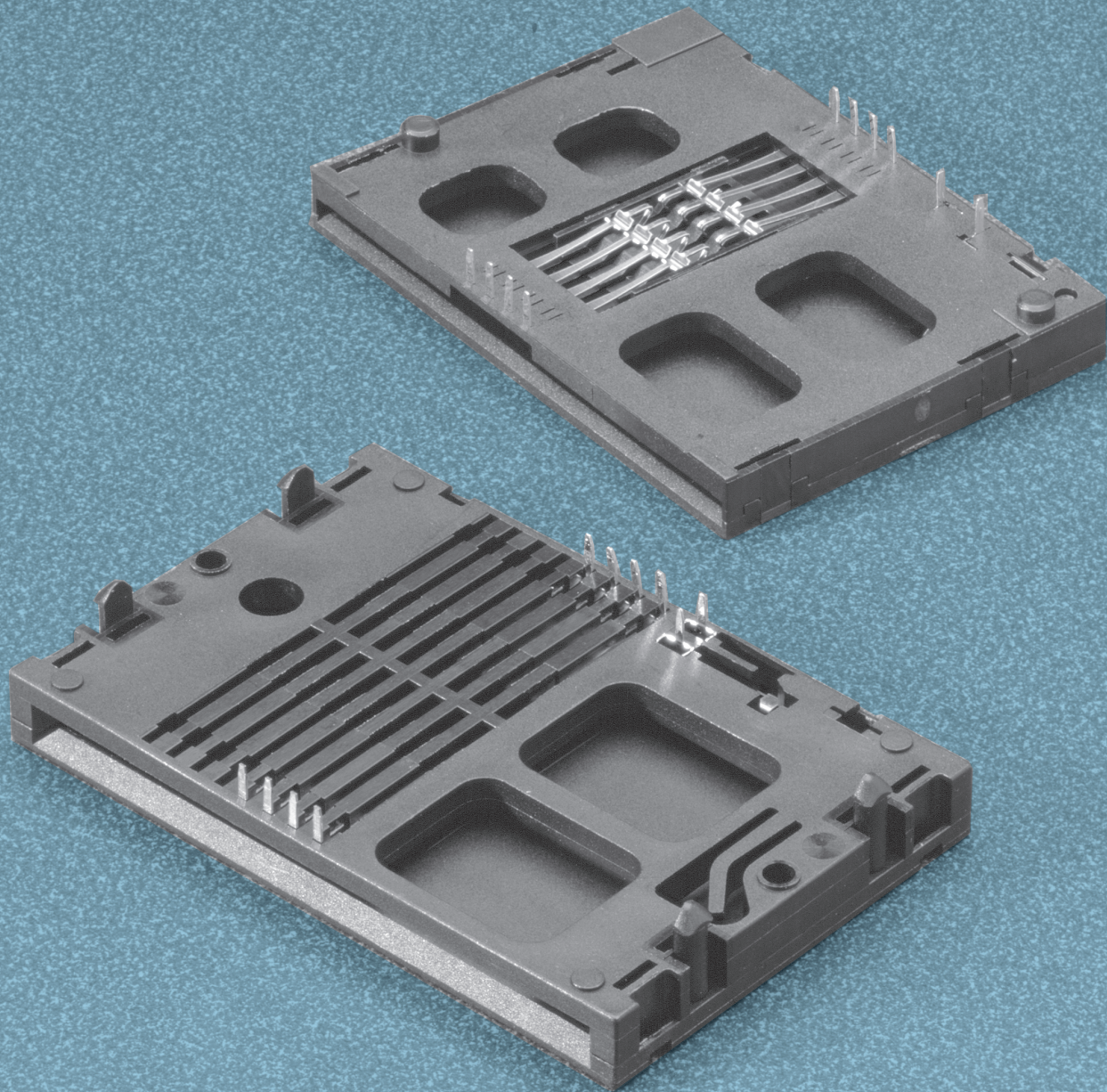


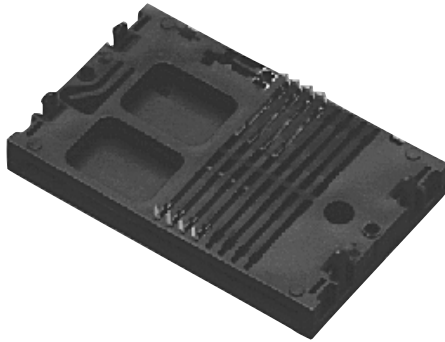
SMART CARD CONNECTORS



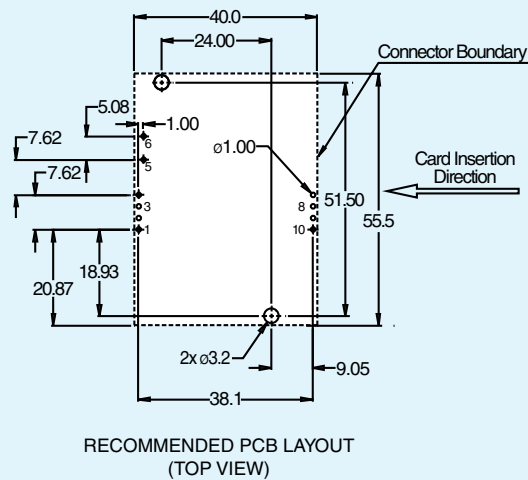
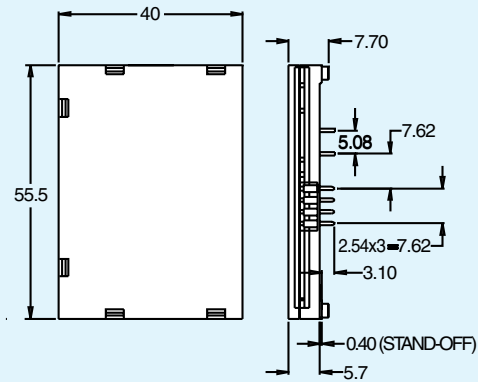
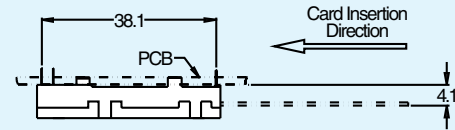
Power Dynamics Smart Card Connectors offer a comprehensive, effective integration of smart cards and the Intranet, Internet Banking, or Electronic Commerce. Available in several configurations, PDI Smart Card Connectors are available to meet customer requirements.

PDI[®]
Power Dynamics, Inc.

SMART CARD 'A' TYPE

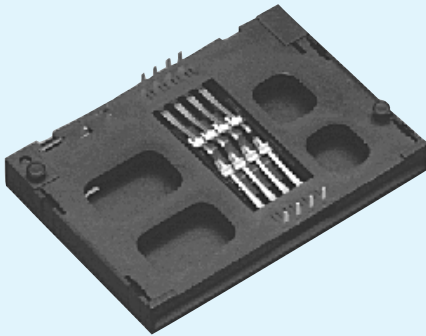


SC-A-08F-O

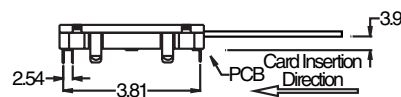
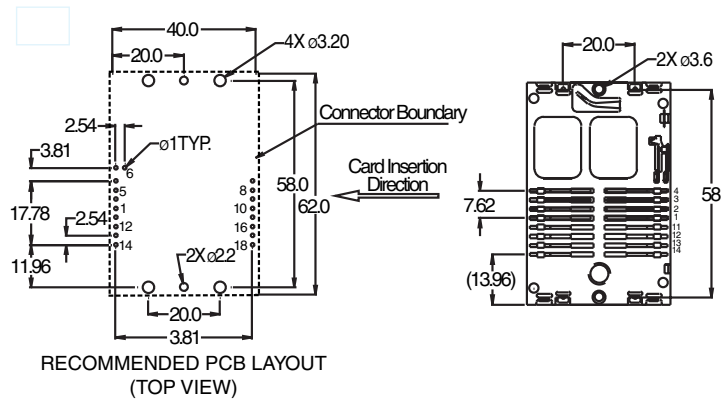
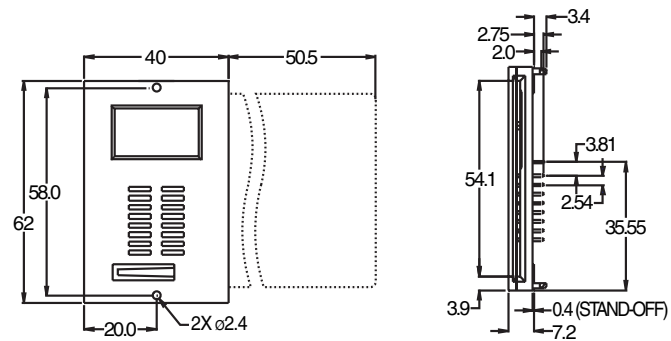


Specifications subject to change without notice. Dimensions in mm.

SMART CARD 'B' TYPE



SC-B-16F-O



Specifications subject to change without notice. Dimensions in mm.

EXAMPLE & ORDERING CODE

SC - **A** - **08** **R** - **O** - **3**

TYPE:	A TYPE = A B TYPE = B
NUMBER OF CONTACTS:	08 or 16
CONTACT LOCATION:	LEFT (8 CONTACTS - B TYPE ONLY) = L RIGHT (8 CONTACTS - B TYPE ONLY) = R FULL (A TYPE - 8 CONTACTS, B TYPE - 16 CONTACTS) = F
SWITCH	OPEN = O CLOSED = C
PLATING:	SELECTIVE GOLD FLASH = BLANK SELECTIVE GOLD 3μ" = 3 SELECTIVE GOLD 50μ" = 5

MATERIAL AND FINISH:

Insulator: A Type: Thermoplastic GF
B Type: PBT, rated UL94V-0
Contact: Phosphor Bronze,
Selective Plating Gold over
40u" Nickel min.
Locking Latch: Stainless Steel
Spring: Steel Wire, Nickel Plated

MECHANICAL SPECIFICATIONS:

Card Insertion Force: 10 N Max.
Card Withdrawal Force: 4 N min.
Insertion Cycle: 200 K cycles min.
ELECTRICAL SPECIFICATIONS:
Rated voltage: 12V
Rated Insulation Voltage: 500V RMS
Contact Resistance:
Reading Contact: 40 mohm min.

Card Present Switch: 40 mohm min.
Insulation Resistance: 500 Mohm min.
Dielectric Withstanding Voltage:
Between card contacts : >1000V RMS
Between card contacts & detection circuit :
>1000V RMS

ENVIRONMENTAL CONDITION:
Operating Temperature: -25°C to +85°C

Specifications subject to change without notice. Dimensions in mm.

