

6

5

4

3

2

1

**MATERIAL AND FINISH:**

Insulator: PC (Polycarbonate), color black,  
UL-94V-0 rated  
Contacts: Brass, Nickel plated

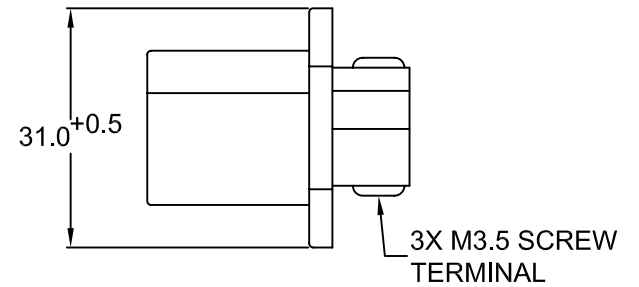
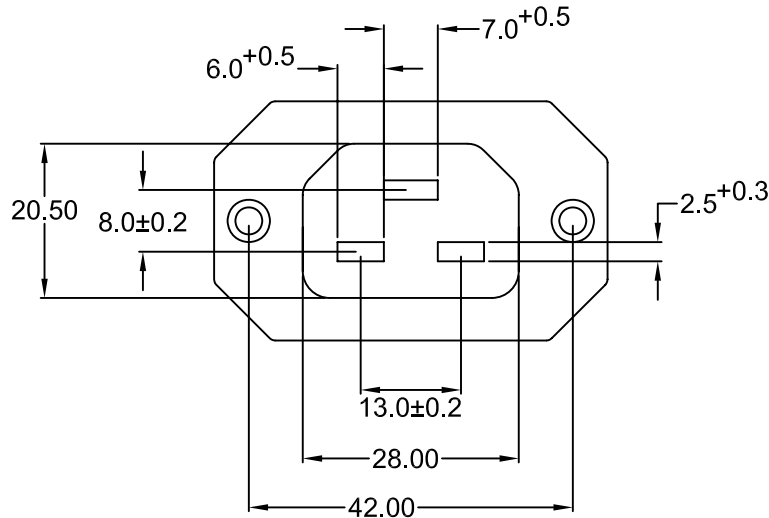
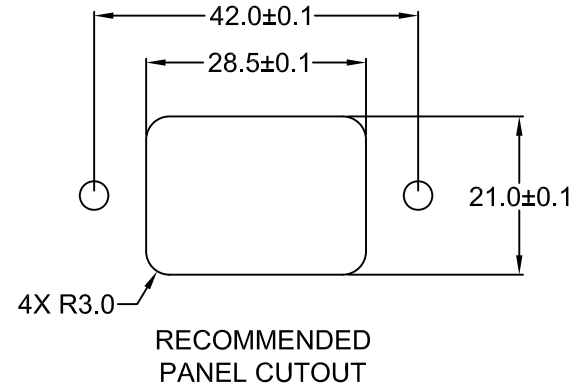
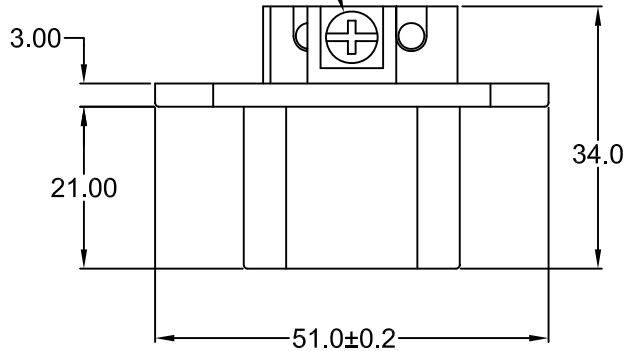
**ELECTRICAL SPECIFICATIONS:**

Current rating: 20 A  
Voltage rating: 250 VAC  
Insulation resistance: 100 Mohm min. at  
500 VDC  
Dielectric withstanding voltage: 2000 VAC  
for one minute



RoHS  
COMPLIANT

GREEN ANODIZED  
GND SCREW



**REVISIONS**

REV	DATE	CHANGE	CHNG		CHK		APPR	
			WAS	SLS	BY	DATE	BY	DATE
A	09/97	SCREW WAS 6-32						
B	04/99	UPDATED DIMENSIONS						
C	4/11/00	REVISED & UPDATE DIM						
D	11/16/01	REVISED / UPDATED						
E	4/27/10	REVISED / UPDATED						

TOLERANCE UNLESS OTHERWISE SPECIFIED			
X ± 1			
X.X ± 0.4			
X.XX ± 0.20			
DRAWN BY	AH	DATE:	8/14/97
CHECK BY	TD	DATE:	4/27/99
APPR BY	PJ	DATE:	4/27/99

**Power Dynamics, Inc.**

Phone: 973 560-0019 Whippany, New Jersey Fax: 973 560-0076

PART: 20A IEC 60320 C21 APPL. OUTLET; SCREW  
TERMINALS; SIDE FLANGE, PANEL MOUNT

PART #: **43R06-2114**

SHEET  
1 of 1

SIZE: A  
SCALE: NTS  
ALL DIMENSIONS FOR REFERENCE ONLY  
DIMENSIONS ARE IN MILLIMETERS

REV: E

6

5

4

3

2

1