

6

5

4

3

2

1

MATERIAL AND FINISH:

Insulator: Polycarbonate, UL-94V-0 rated
Contacts: Copper, Tin plated

ELECTRICAL SPECIFICATIONS:

Current rating: 10 A
Voltage rating: 250 VAC
Insulation resistance: 100 Mohm min. at 500 VDC
Dielectric withstanding voltage: 2000 VAC for one minute



ORDERING CODE:

42R34-1 2
 1 2

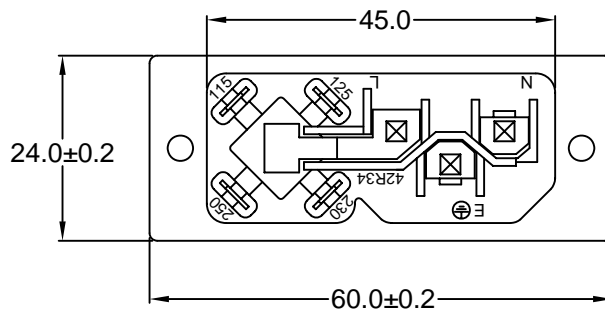
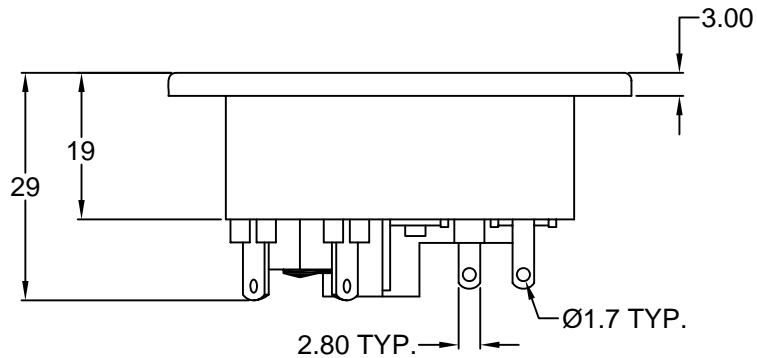
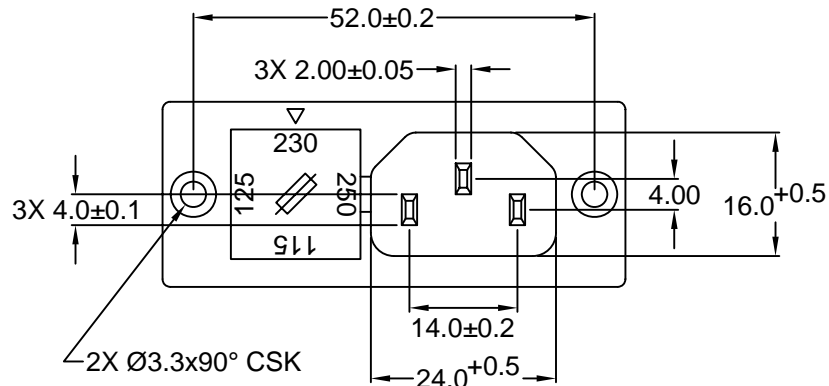
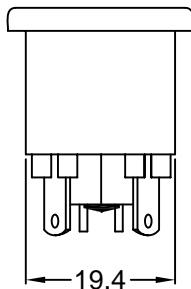
- 1) COLOR
1 = BLACK
2 = GRAY

2) ELECTRICAL CIRCUIT CONFIGURATION

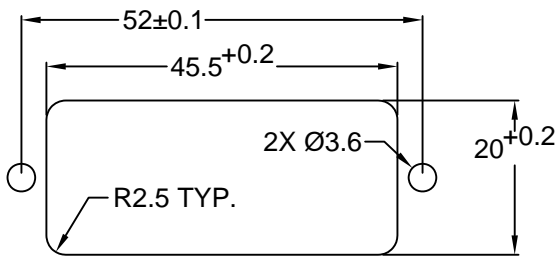
1 = 10A 250V 70°C
2+GROUND

2 = 10A 250V 120°C
2+GROUND

4 = 10A 250V 70°C
2 POLE



RoHS
COMPLIANT



RECOMMENDED
PANEL CUTOUT

| | | |
|---|----|----------------|
| TOLERANCE UNLESS OTHERWISE SPECIFIED | | |
| X | ± | 1 |
| X.X | ± | 0.4 |
| X.XX | ± | 0.20 |
| DRAWN BY | GQ | DATE: 09/13/01 |
| CHECK BY | TD | DATE: 09/18/01 |
| APPR BY | PB | DATE: 09/18/01 |

Power Dynamics, Inc.

Phone: 973 560-0019 Whippany, New Jersey Fax: 973 560-0076

PART: IEC 60320 APPL. INLET AND COMBINATION
FUSE HOLDER; SOLDER TERMINALS; SCREW

42R34-1X2X SHEET 1 of 1

SIZE: A ALL DIMENSIONS FOR REFERENCE ONLY
SCALE: NTS DIMENSIONS ARE IN MILLIMETERS REV:

| | | | |
|-----------|--------|-----|------|
| REVISIONS | CHANGE | CHK | APPR |
| | DATE | | |

6

5

4

3

2

1