

**MATERIAL AND FINISH:**

Insulator: Polycarbonate, UL-94V-0 rated  
Contacts: Copper, Tin plated

**ELECTRICAL SPECIFICATIONS:**

Current rating: 10 A  
Voltage rating: 250 VAC  
Insulation resistance: 100 Mohm min. at 500 VDC  
Dielectric withstanding voltage: 2000 VAC for one minute



**ORDERING CODE:**

42R38-1    2     
          1    2

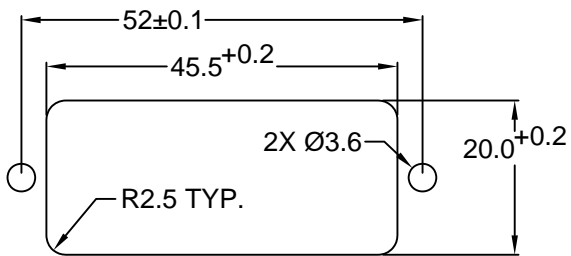
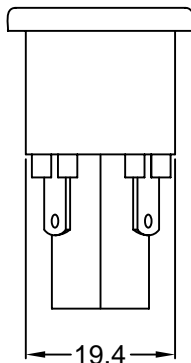
- 1) COLOR  
1 = BLACK  
2 = GRAY

**2) ELECTRICAL CIRCUIT CONFIGURATION**

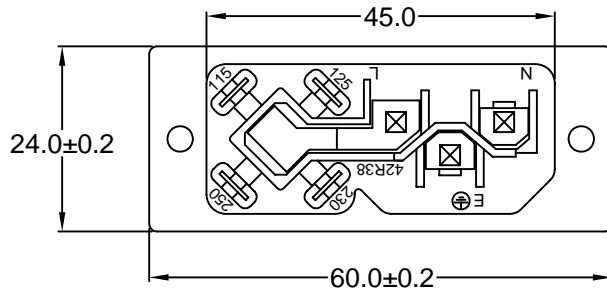
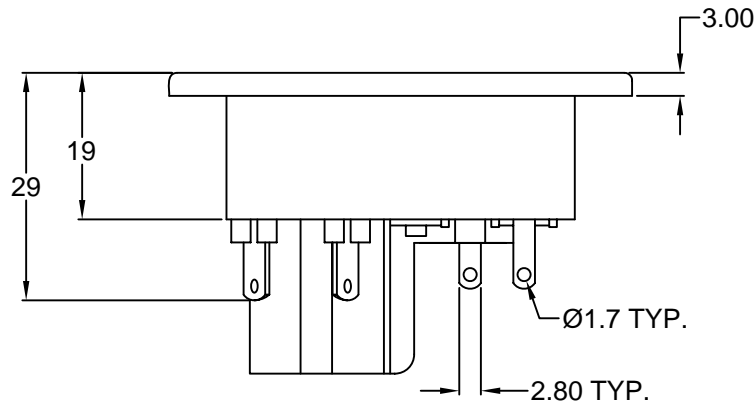
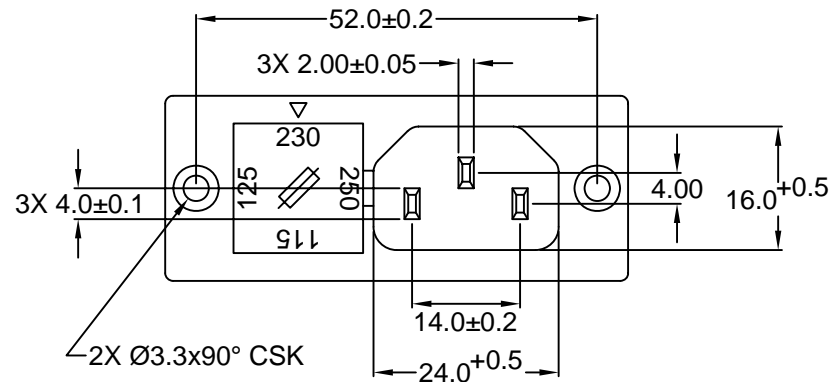
1 = 10A 250V 70°C  
2+GROUND

2 = 10A 250V 120°C  
2+GROUND

4 = 10A 250V 70°C  
2 POLE



**RECOMMENDED  
PANEL CUTOUT**



**RoHS  
COMPLIANT**

TOLERANCE UNLESS OTHERWISE SPECIFIED	
X	± 1
X.X	± 0.4
X.XX	± 0.20

**Power Dynamics, Inc.**

Phone: 973 560-0019 Whippany, New Jersey Fax: 973 560-0076

PART: IEC 60320 APPL. INLET AND COMBINATION  
FUSE HOLDER; SOLDER TERMINALS; SCREW

DRAWN BY	GQ	DATE:	09/17/01
CHECK BY	TD	DATE:	09/18/01
APPR BY	PB	DATE:	09/18/01

PART #: <b>42R38-1X2X</b>		SHEET
SIZE: A		1 of 1
SCALE: NTS	ALL DIMENSIONS FOR REFERENCE ONLY DIMENSIONS ARE IN MILLIMETERS	
REV:		

D

C

B

A

REV	DATE	CHANGE	CHNG	CHK	APPR