

6

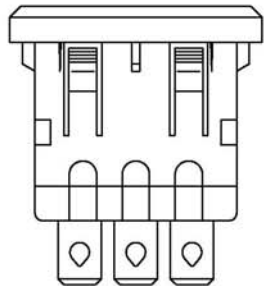
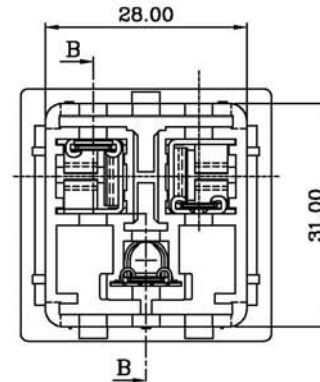
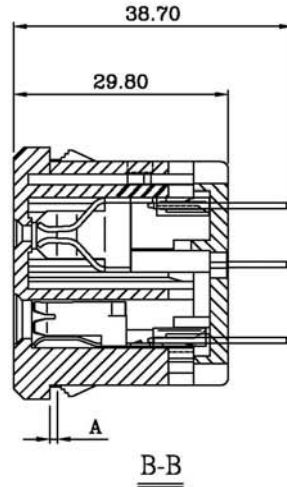
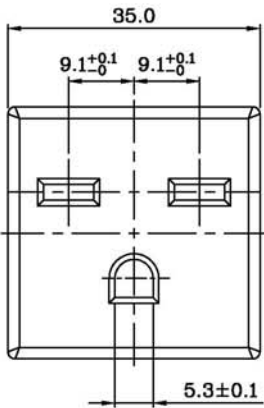
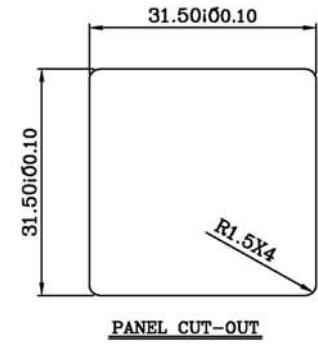
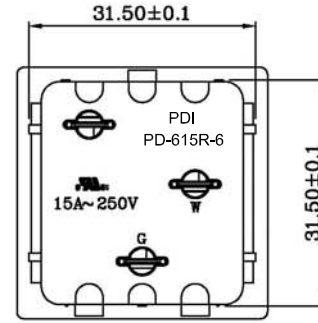
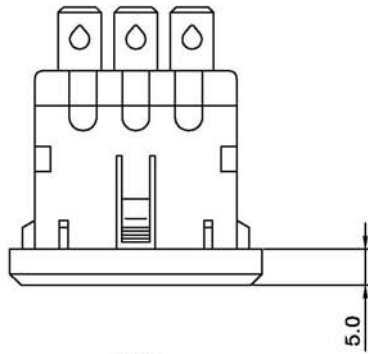
5

4

3

2

1



MATERIAL:
 Housing & Back Cover: Nylon, UL-94V-0 color black
 Contacts: Copper alloy

ELECTRICAL SPECIFICATIONS:
 Rated current & voltage: 15A 250VAC

APPROVALS: 



TOLERANCE UNLESS OTHERWISE SPECIFIED	
X	± 1
X.X	± 0.4
X.XX	± 0.20

Power Dynamics, Inc.

Phone: 973 560-0019 Whippany, New Jersey Fax: 973 560-0076

PART: NEMA 6-15R; 6.4 Q.C. TAB; SNAP IN
 PANEL MOUNT RECEPTACLE

DRAWN BY	PB	DATE:	8/10/10
CHECK BY		DATE:	
APPR BY		DATE:	

PART #: PD-615R-6		SHEET 1 of 1
SIZE: A	ALL DIMENSIONS FOR REFERENCE ONLY DIMENSIONS ARE IN MILLIMETERS	
SCALE: NTS	REV:	

REVISIONS	CHANGE	CHK	CHK	APPR
	DATE			
	REV			

6

5

4

3

2

1