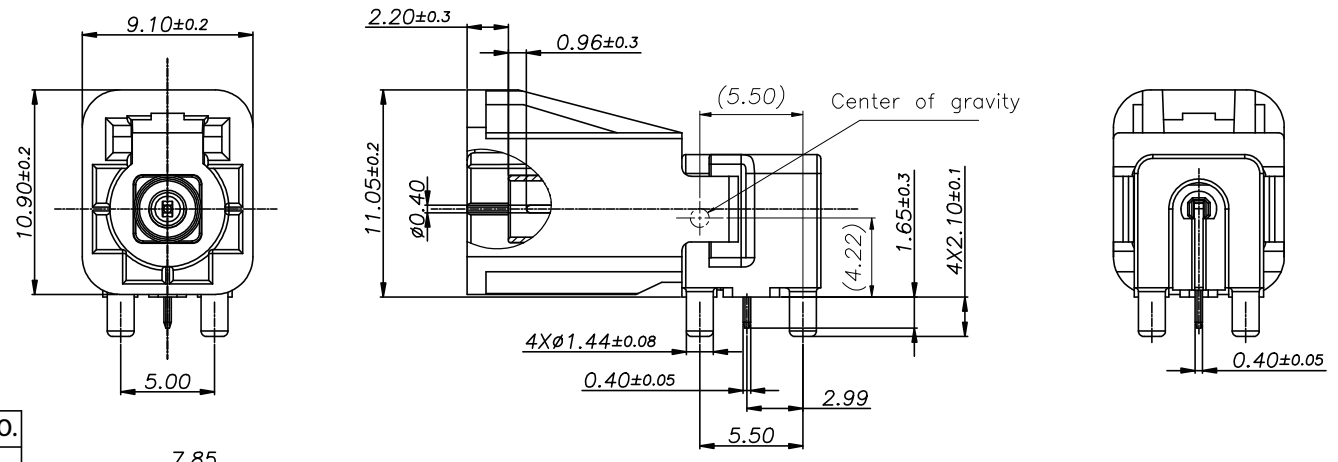


8	7	6	5	4	3	2	1	
ECN NO.				REV	DATE	DESCRIPTION	MDF'D	APP'D
				A0	2022.7.3	Initial version	LEo	JJW

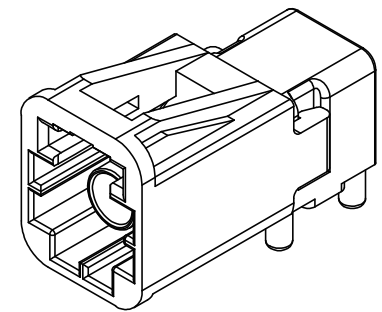
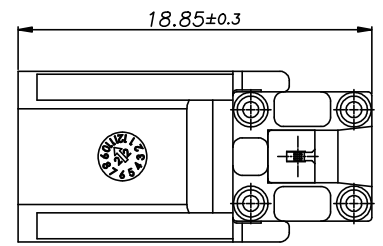
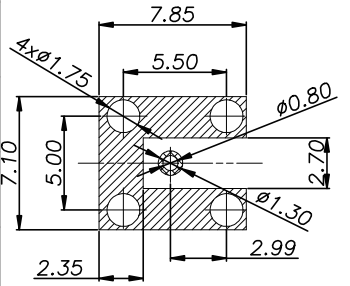
- NOTES:**
- 1. Electrical:**
- A. Impedance: 50Ω
 - B. Frequency: DC to 9GHz
 - C. Return loss:
 - ≥25dB, DC-3.0GHz;
 - ≥20dB, DC-6.0GHz;
 - ≥12dB, DC-9.0GHz
 - D. Insulation resistance: ≥1X10⁸ MΩ
 - E. Center contact resistance : ≤15 mΩ
 - F. Outer contact resistance : ≤5 mΩ
 - G. Test voltage : 750 V rms
 - H. Working voltage : 335 V rms
 - I. Power current : ≤1 A DC
- 2. Mechanical:**
- A. Mating cycles : ≥25
 - B. Engagement force : ≤15 N
 - C. Disengagement force : ≥2 N
 - D. Retention force latch : ≥110 N
 - E. Coding efficiency : ≥150 N
- 3. Environmental:**
- A. Temperature range : -40°C to +105°C

Mates with p/n 102x00004 Series



CODING TABLE

Plug	Coding	P/N	Color	Ral NO.
	A	101A00007	Black	9005
	B	101B00007	White	9010
	C	101C00007	Blue	5012
	D	101D00007	Claret	4004
	E	101E00007	Green	6002
	F	101F00007	Brown	8011
	Z	101Z00007	Waterblue	5021

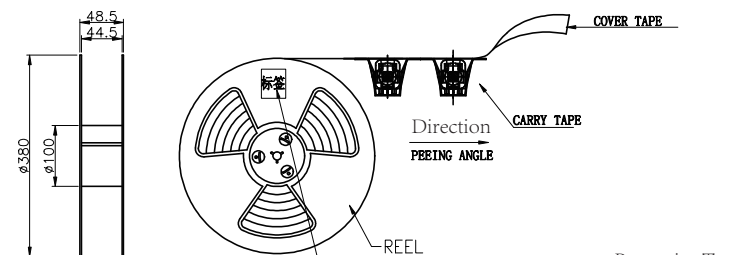
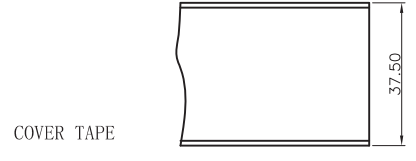
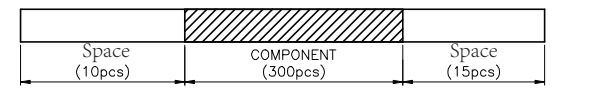
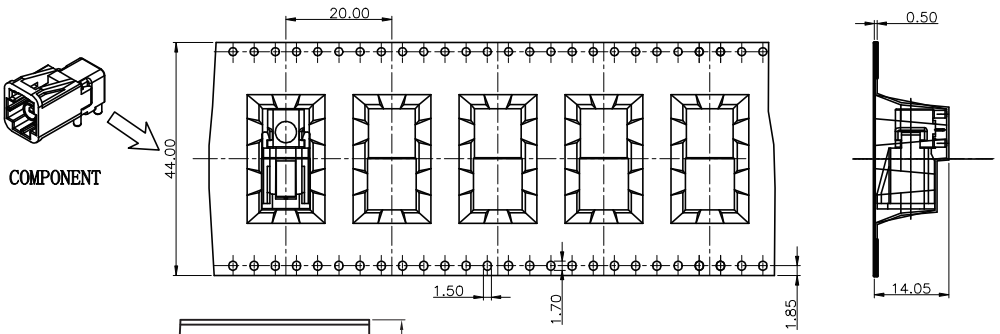


NO	Part name	Number	Material	Plating / Color
4	Contact	1	copper alloy	Nickel-plated bottom 100u"MIN, contact gold-plated 10u"MIN, tin 100u"MIN
3	Body	1	Zinc	Copper bottom 400u"MIN, nickel bottom 80u"MIN, fogged tin 100u"MIN.
2	Insulator	1	LCP	Natural
1	Housing	1	PA	See table1

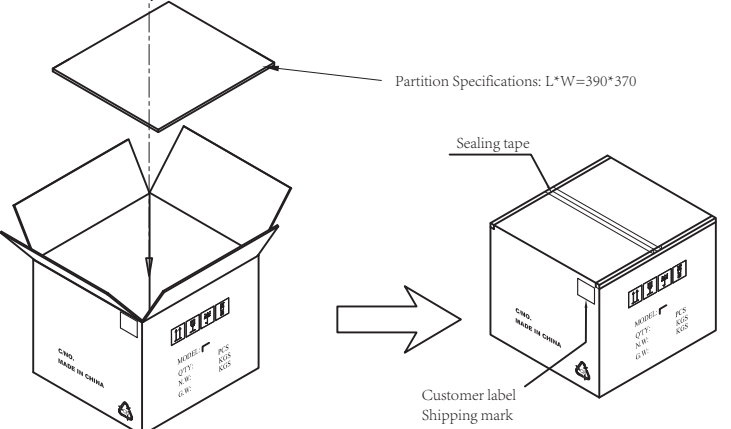
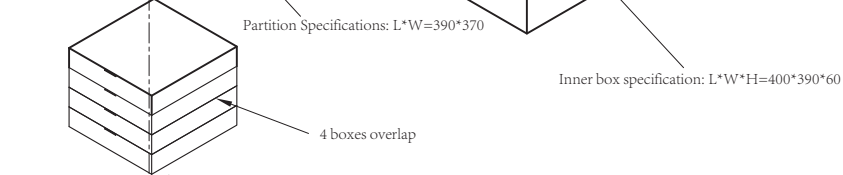
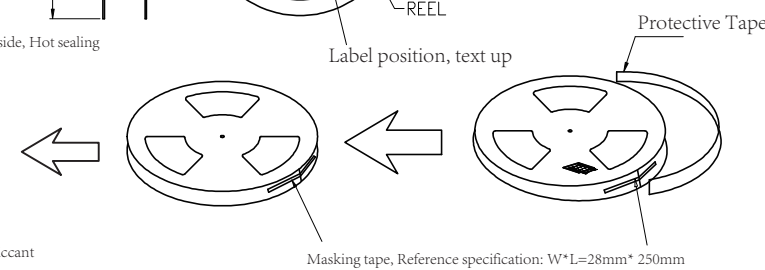
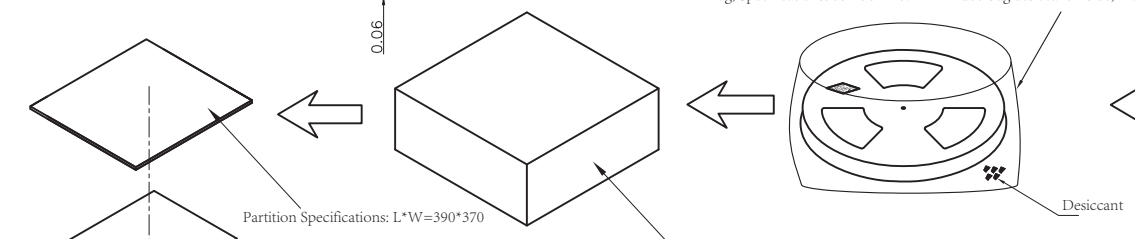
General Tolerance	Angle Tolerance
X ±0.5	±1°
.X ±0.2	Unless otherwise specified, dimensions are in metric and tolerances are
.XX ±0.1	
MATL: SEE-NOTES	
CUSTOMER-DRAWING	

POWER DYNAMICS INC.			
145 Algonquin Parkway, Whippany, NJ 07981			
Phone: 1-973-560-0019		e-mail: sales@powerdynamics.com www.powerdynamics.com	
DESIGNER	LEo	TITLE: 2 pin Mini Fakra R/A PCB Plug	
CHECKED	LEo	PARTS NO: 101x00007	
APPROVAL	JJW		(UNIT): mm (SCALE): 1:1 (SHT): 1/2

ECN NO.	REV	DATE	DESCRIPTION	MDF'D	APP'D
	A0	2022.7.3	Initial version	LEo	JJW



HDPE Bag, Specifications 500*430 T=0.12mm Put 5 bag desiccant inside, Hot sealing



- Packaging method
 - Place the products in the Carry-Tyape in the same direction as shown in the figure, with 1 pcs in each slot and 10 empty slots in the front and 15 empty slots in the back.
 - Put the finished product Reel into the HDPE bag, seal it and put it into the inner carton, 1R/inner carton, fold the four inner cartons and put them into the outer carton, and put one cardboard at the bottom and top respectively.
- The inner label is pasted on the side of the oval hole of the carrier belt, and the label format is in accordance with the business requirements.
- Sealing force of coil tape 50g-140g (cold sealing)
- Package quantity: 300pcs/Reel; 1200pcs/Carton
- Carton size: 420 * 405 * 270mm,
Partition size: 390 * 370mm,
Inner box size: 400 * 390 * 60mm
- The outer box is sealed with transparent tape, and the reel is 15 ".

General Tolerance	Angle Tolerance
X ±0.5	±1°
.X ±0.2	Unless otherwise specified, dimensions are in metric and tolerances are
.XX ±0.1	
MATL: SEE-NOTES	
CUSTOMER-DRAWING	

POWER DYNAMICS INC.			
145 Algonquin Parkway, Whippany, NJ 07981			
Phone: 1-973-560-0019		e-mail: sales@powerdynamics.com	
www.powerdynamics.com			
DESIGNER	LEo	TITLE:	1pin Mini Fakra R/A PCB Plug
CHECKED	LEo	PARTS NO:	101x00007
APPROVAL	JJW	(UNIT): mm	(SCALE): 1:1 (SHT): 2/2