




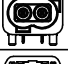



**NOTES:**

1. Electrical:
  - A. Impedance: 50Ω
  - B. Frequency: DC to 9GHz
  - C. Return loss:
    - ≥25dB, DC-3.0GHz;
    - ≥20dB, DC-6.0GHz;
    - ≥12dB, DC-9.0GHz
  - D. Insulation resistance: ≥1X10<sup>9</sup> MΩ
  - E. Center contact resistance : ≤5 mΩ
  - F. Outer contact resistance : ≤5 mΩ
  - G. Test voltage : 750 V rms
  - H. Working voltage : 335 V rms
  - I. Power current : ≤1 A DC
2. Mechanical:
  - A. Mating cycles : ≥25
  - B. Engagement force : ≤30 N
  - C. Disengagement force : ≥25 N
  - D. Retention force latch : ≥110 N
  - E. Coding efficiency : ≥150 N
3. Environmental:
  - A. Temperature range : -40°C to +105°C

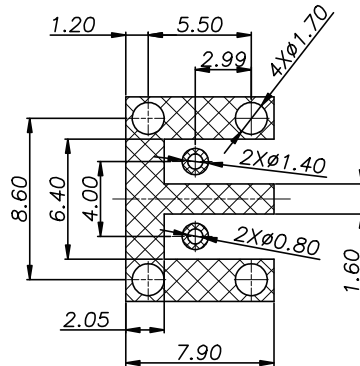
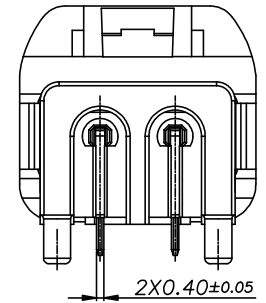
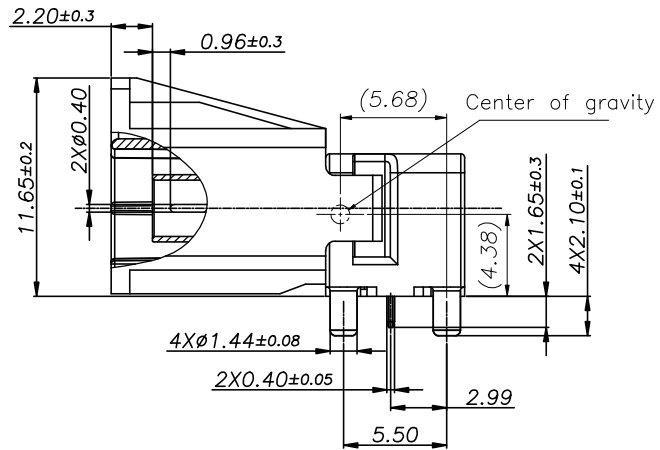
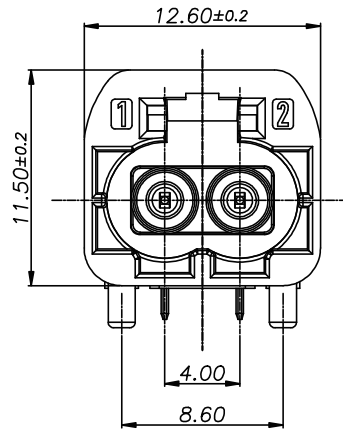
Mates with p/n 102x00002 Series

**CODING TABLE**

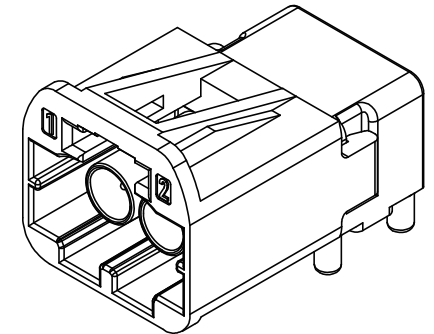
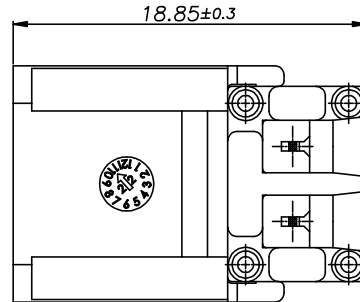
Plug	Coding	P/N	Color	Ral NO.
	A	101A00008	Black	9005
	B	101B00008	White	9010
	C	101C00008	Blue	5012
	D	101D00008	Claret	4004
	E	101E00008	Green	6002
	F	101F00008	Brown	8011
	Z	101Z00008	Waterblue	5021

NO	Part name	Number	Material	Plating / Color
4	Contact	2	copper alloy	Nickel-plated bottom 80u"MIN, contact gold-plated 10u"MIN, tin 100u"MIN
3	Body	1	Zinc	Copper bottom 400u"MIN, nickel bottom 80u"MIN, fogged tin 100u"MIN.
2	Insulator	2	LCP	Natural
1	Housing	1	PA	See table1

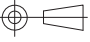
ECN NO.	REV	DATE	DESCRIPTION	MDF'D	APP'D
	A0	2022.7.3	Initial version	LEo	JJW



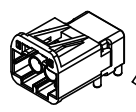
PCB LAYOUT  
TOLERANCE: ±0.05



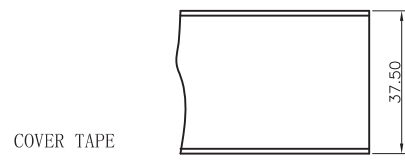
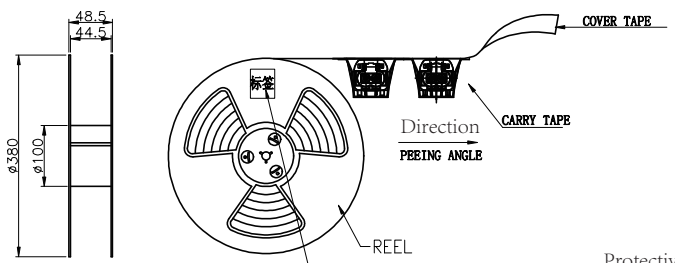
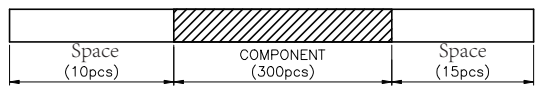
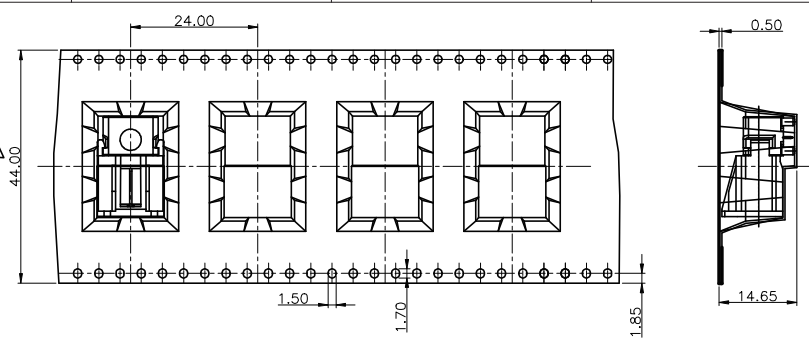
General Tolerance	Angle Tolerance
X ±0.5	±1°
.X ±0.2	Unless otherwise specified, dimensions are in metric and tolerances are
.XX ±0.1	
MATL: SEE-NOTES	
CUSTOMER-DRAWING	

POWER DYNAMICS INC.		
145 Algonquin Parkway, Whippany, NJ 07981		
Phone: 1-973-560-0019		e-mail: sales@powerdynamics.com
www.powerdynamics.com		
DESIGNER	LEo	TITLE: 2 pin Mini Fakra R/A PCB Plug
CHECKED	LEo	PARTS NO: 101x00008
APPROVAL	JJW	 (UNIT): mm (SCALE): 1:1 (SHT): 1/2

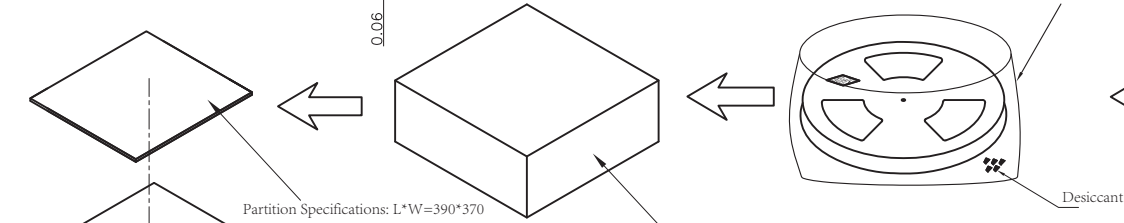
ECN NO.	REV	DATE	DESCRIPTION	MDF'D	APP'D
	A0	2022.7.3	Initial version	LEo	JJW



COMPONENT



HDPE Bag, Specifications 500\*430 T=0.12mm Put 5 bag desiccant inside, Hot sealing

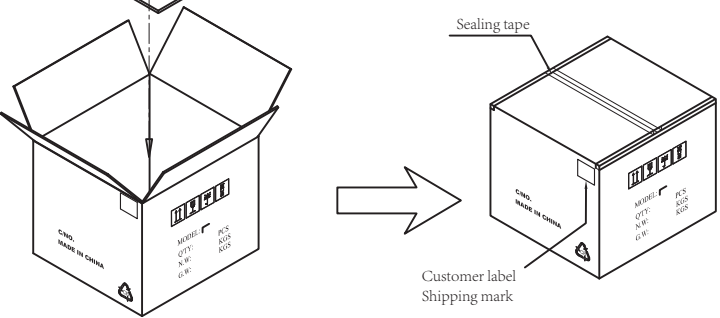


Partition Specifications: L\*W=390\*370

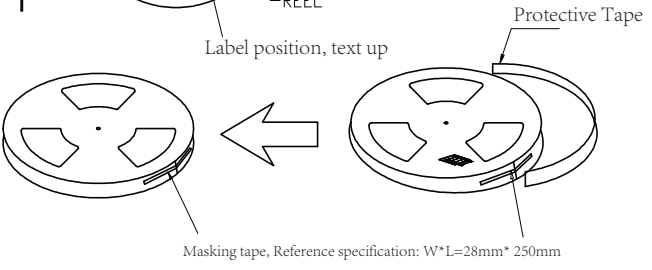
Inner box specification: L\*W\*H=400\*390\*60

4 boxes overlap

Partition Specifications: L\*W=390\*370



Customer label  
Shipping mark



1. Packaging method

- 1.1 Place the products in the Carry-Tyape in the same direction as shown in the figure, with 1 pcs in each slot and 10 empty slots in the front and 10 empty slots in the back.
- 1.2 Put the finished product Reel into the HDPE bag, seal it and put it into the inner carton, 1R/inner carton, fold the four inner cartons and put them into the outer carton, and put one cardboard at the bottom and top respectively.
2. The inner label is pasted on the side of the oval hole of the carrier belt, and the label format is in accordance with the business requirements.
3. Sealing force of coil tape 50g-140g (cold sealing)
4. Package quantity: 250pcs/Reel; 1000pcs/Carton
5. Carton size: 420 \* 405 \* 270mm,  
Partition size: 390 \* 370mm,  
Inner box size: 400 \* 390 \* 60mm
6. The outer box is sealed with transparent tape, and the reel is 15 ".

General Tolerance	Angle Tolerance
X ±0.5	±1° Unless otherwise specified, dimensions are in metric and tolerances are
.X ±0.2	
.XX ±0.1	
MATL: SEE-NOTES	
CUSTOMER-DRAWING	

POWER DYNAMICS INC.		
145 Algonquin Parkway, Whippany, NJ 07981		
Phone: 1-973-560-0019	e-mail: sales@powerdynamics.com	www.powerdynamics.com
DESIGNER	LEo	TITLE: 2 pin Mini Fakra R/A PCB Plug
CHECKED	LEo	PARTS NO: 101x00008
APPROVAL	JJW	(UNIT): mm (SCALE): 1:1 (SHT): 2/2