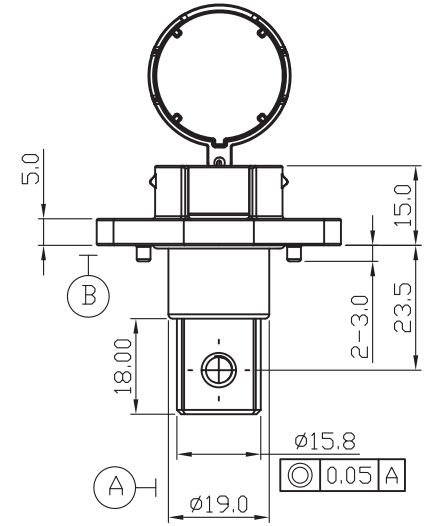
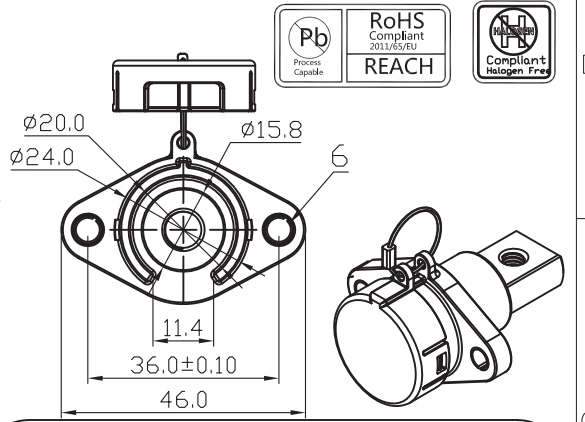
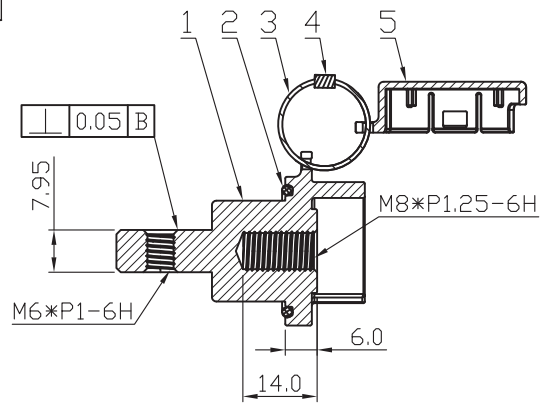
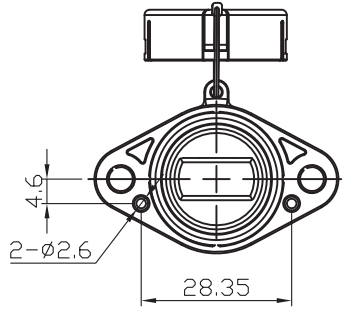
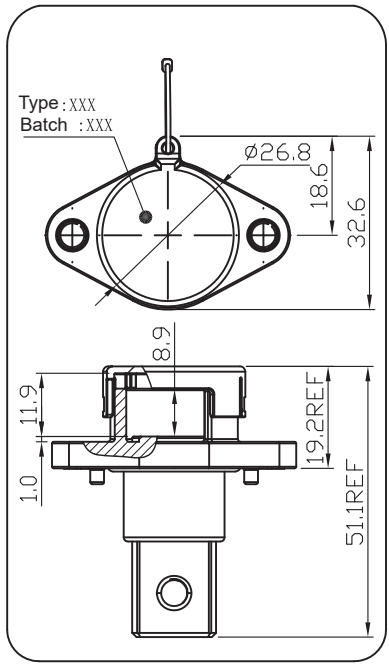
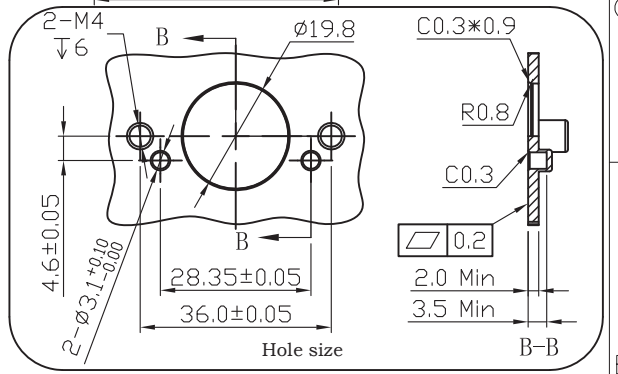


Customer selection					
No.	Specification	Part No.	Drawing No.	Color	1.plastic body 5. top cover
1	L001-01S1-70	A1-L001P001	04-HV0100-B00-001	Black	B1L001002 13L00101
2	L001-01S11-70	A1-L001P002	04-HV0100-R00-001	Red RAL3004	B1L001001 13L00102

ECN NO.	REV	DATE	DESCRIPTION	MDF'D	APP'D
	A0	2022.7.3	Initial version	ZsH	Qilin



Coding rules for laser lettering
 L001-01S1-70 21G15
 Part No.
 year: 2021
 month: A-1 , B-2M,
 Push in this way G is July
 day: date of manufacture 15



Technical requirements:

- Material:
 - Contact: a. Power terminal: copper alloy / silver plated 3-6um;
 - Shell: synthetic resin flame retardant grade UL94 V-0
 - Waterproof part: silicone rubber
 - Machining of upper cover and base connecting steel wire rope ϕ 15mm REF
 - Rated voltage: 1000V DC
 - Rated current: 250A MAX (normal state)
 - Withstand voltage: 3000V AC (1min), leakage current < 5mA
 - Insulation resistance: > 2000M Ω (normal state)
 - Working temperature: - 40 C ~ +125 C
 - Recommended installation torque:
 - M6: 6-8N. m (recommended effective fitting screw length 6-8mm)
 - M8: 14-25N. m (recommended effective fitting screw length 8-12mm)
 - Waterproof grade: IP67/IPX9 (matching state)
 - The product meets 100% air tightness testing
 - Salt spray test: 96H passed
 - The product meets environmental RoHS requirements.

6	26L001C0	M4 Steel ring L001 series	2
5	SEE LIST	Top cover L001 series	1
4	W013002	3*5 line ball	1
3	B08-TJ50-001	0.8 Outer diameter steel wire rope	0.08m
2	31L00100	Oring (21*2)	1
1	B1L001002	Plastic body	1
NO	SN	Part Name	number

General Tolerance	Angle Tolerance
X ± 0.5	$\pm 1^\circ$
.X ± 0.2	
.XX ± 0.1	
MATL: SEE-NOTES	
CUSTOMER-DRAWING	

POWER DYNAMICS INC.
 145 Algonquin Parkway, Whippany, NJ 07981
 Phone: 1-973-560-0019 e-mail: sales@powerdynamics.com www.powerdynamics.com

DESIGNER	ZsH	TITLE:	L001 High Voltage Metal Connector
CHECKED	ZsH	PARTS NO:	L001-01S1-70
APPROVAL	Qilin	(UNIT):	mm (SCALE): 1:1 (SHT): 1/1